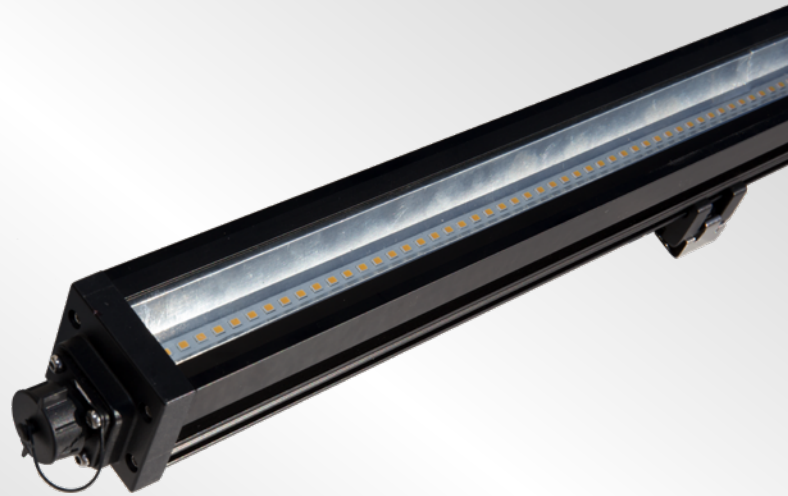




LED Garden Center Light



PERFORMANCE FEATURES

Application

Spirit LED Lighting introduces its new LED Lighting System Solutions - THE PHOENIX SERIES featuring the second generation Garden Center Outside LED Light

Ambient Operating Temp Range

-40° C to +60° C

Color Rendering

Color Temp: 4000K
Color Rendering Index: > 85 CRI (R9 >25, R9-R12 >59)
Beam Angle: 85° Flood
Optical Clarity: >90%
Lighting Configuration: Full Cutoff

Wiring

- Plug & Play - 6' 14/3 SEOW Flexible
- Cord
- Weatherproof Screw-on Connector Daisy Chain Capable - Includes Output Connector for Daisy Chain Connecting

Power and Output

Voltage: 120-277V AC 50/60 Hz
Total Watts: 40W
Total Lumens: 5,000 lms
Luminous Efficacy: 125 Lm/W
Lumens per Foot: 1250 Lm/Ft
Power Efficiency: >95%
Power Factor: 0.992
Amperage: 0.34A @ 120V
0.17A @ 240V
0.15A @ 277V

UL Listing

Suitable for wet locations

Mounting

Back Mounted Detachable Surface Mount C Clips

Finish

Anodized - Black, White, Grey, or Silver

Housing

Diecast Aircraft Grade Extruded Aluminum

Lifespan

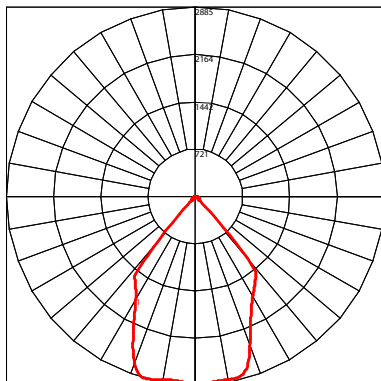
65,000+ Hours (L70)
Warranty: 5 Years

Model No.

LED-GCTR-WMR-PHX

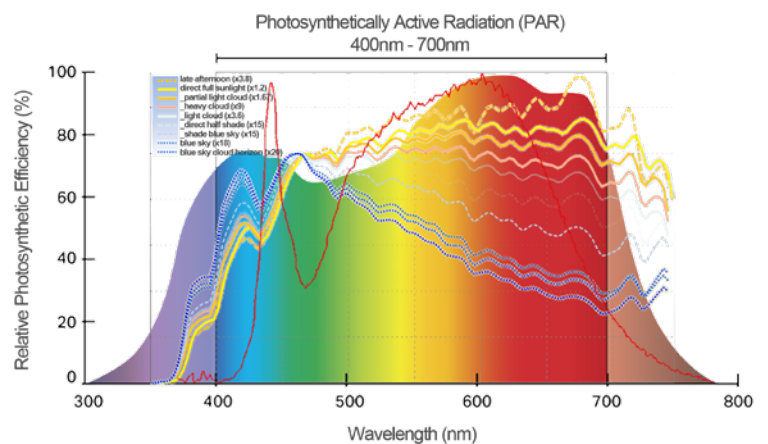
Dimensions: 48.58"-L x 1.83"-W x 1.78"-H

Weight: 2.75 lbs



IES Summary Report
Report Format: DarkSky
Candela Display

#1 LED-GCTR-WMR-PHX -
Vertical Plane Through
Horizontal Angles (180 - 0)
Max. Candela

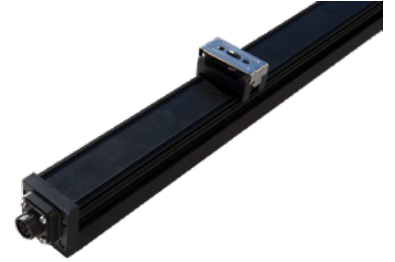


LED-GCTR-WMR-PHX

The LED's in this linear light are Cree LED's that have been chosen for their high lumen per watt ratio and extreme long life. These Cree LEDs provide over 125 lumens per watt output and have 98% lumen retention at 10,000 hours, 85% lumen retention at 50,000 hours and 70% lumen retention at 65,000 hours (calculated at 12 hours use/day), giving them better efficiency and operational life than comparable LEDs.

Spirit LED Lighting's LED-GCTR-WMR-PHX produces 5,000 lumens with a color temperature of 4000K. We also offer a 3000K model for dark sky compliance for outdoor installations in locations that require this dark sky feature. Average foot-candle distribution from a height of 10 feet is 25 fc. This LED fixture offers a CRI > 85 (with R9 > 25 and R9-R12 > 59 averaged).

A 85-degree beam angle with full cutoff lens and internal reflector keeps light distribution downwards, which reduces light spillage. A UV and shatter resistant acrylic lens provides > 90% optical clarity (< 3% loss of optical clarity after 10 years of exposure to sunlight). This component has higher optical clarity than polycarbonate.



With a -40°C to +60°C ambient temperature operating range and 0-92% relative humidity operating range, the LED fixture can operate inside freezers, indoors and outdoors. The unit is NRTL listed for wet locations. We offer an explosion proof Class I, Division 2 certified model as well.

Easy Power Connection

The LED fixture is compatible with single-phase 120-277V AC, 50/60 Hz. This wide voltage and frequency range enables the unit to be used in domestic and international markets regardless of local voltage. An integrated LED driver is located inside the light's housing (no external power supply needed). The internal driver is field serviceable and can be replaced in the field in the event of failure.



Spirit LED Lighting's LED-GCTR-WMR-PHX comes with 6 feet of 14/3 SEOW power cord, which is UV, chemical and abrasion resistant as well as designed for harsh environments, with vulcanized rubber molded plug ends for waterproof connections. Dual, screw-on connectors are available at both ends of the fixture for plug-and-play, daisy-chain connections. Up to 25 units can be connected together and receive power from a single source.

Mounting for this unit is provided by two standard C-clamp brackets that snaps into the back of the fixture. With this mounting solution, installation can be completed by one person using a drill. Access to the fixture is also easier, which makes servicing, maintenance and replacement faster.

Spirit LED Lighting's LED-GCTR-WMR-PHX weighs 2.75 lbs and measures 48.58 inches length, 1.83 inches wide and 1.78 inches height.

